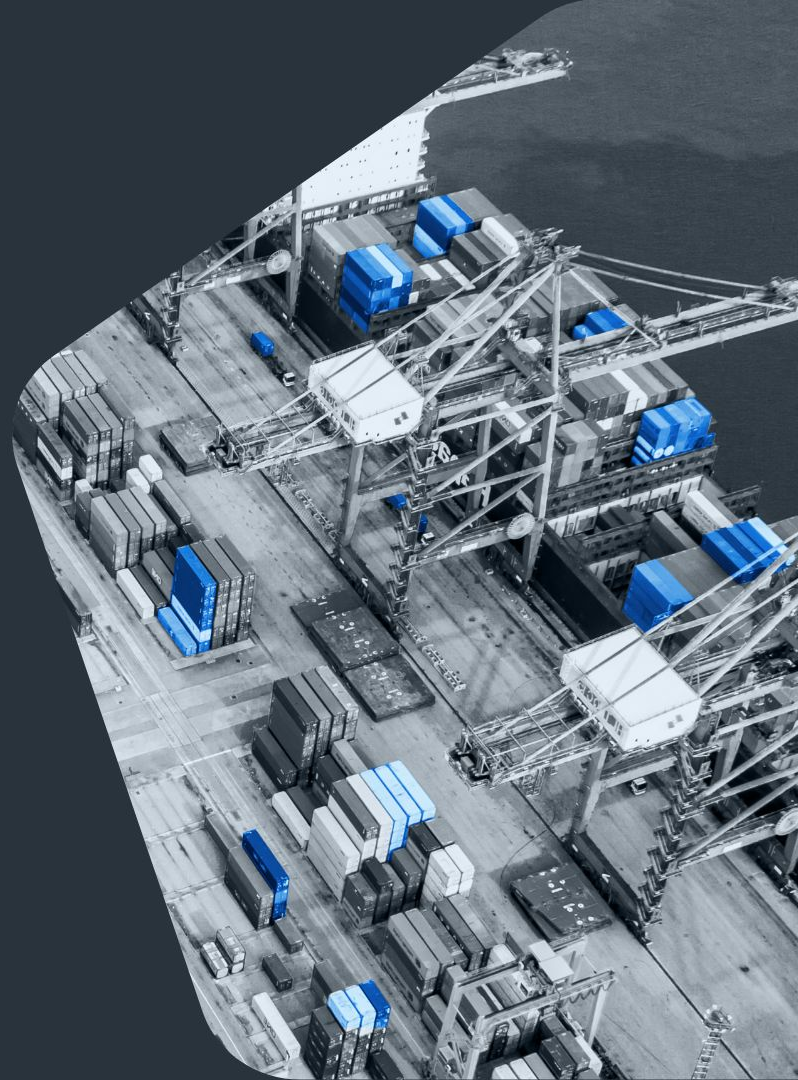


marinetraffic
a kpler brand

Navigating U.S. Trade Policy: Impacts on Container Shipping and Port Activity

((▶)) Live Webinar



MarineTraffic AIS

7x more

AIS positions captured each day than our competitors

400k+

ships tracked per day

7,000+

AIS stations globally

175+ countries

with active AIS stations

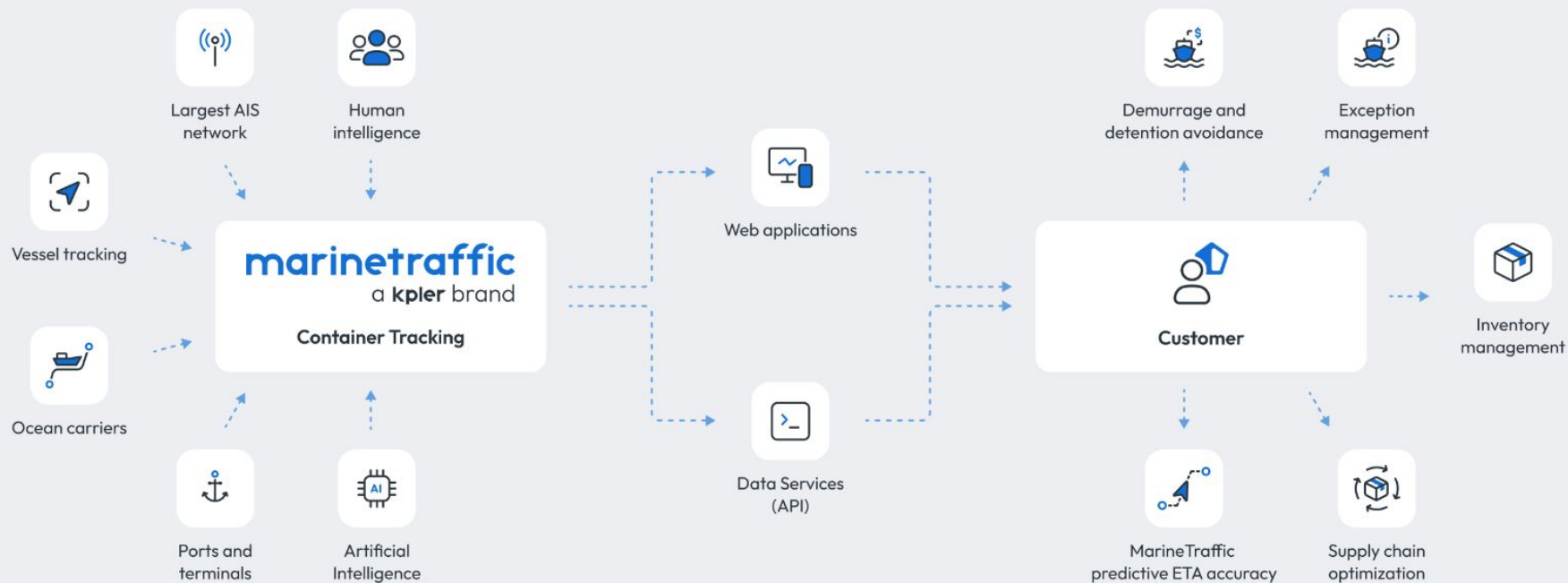
13+ years

historical data

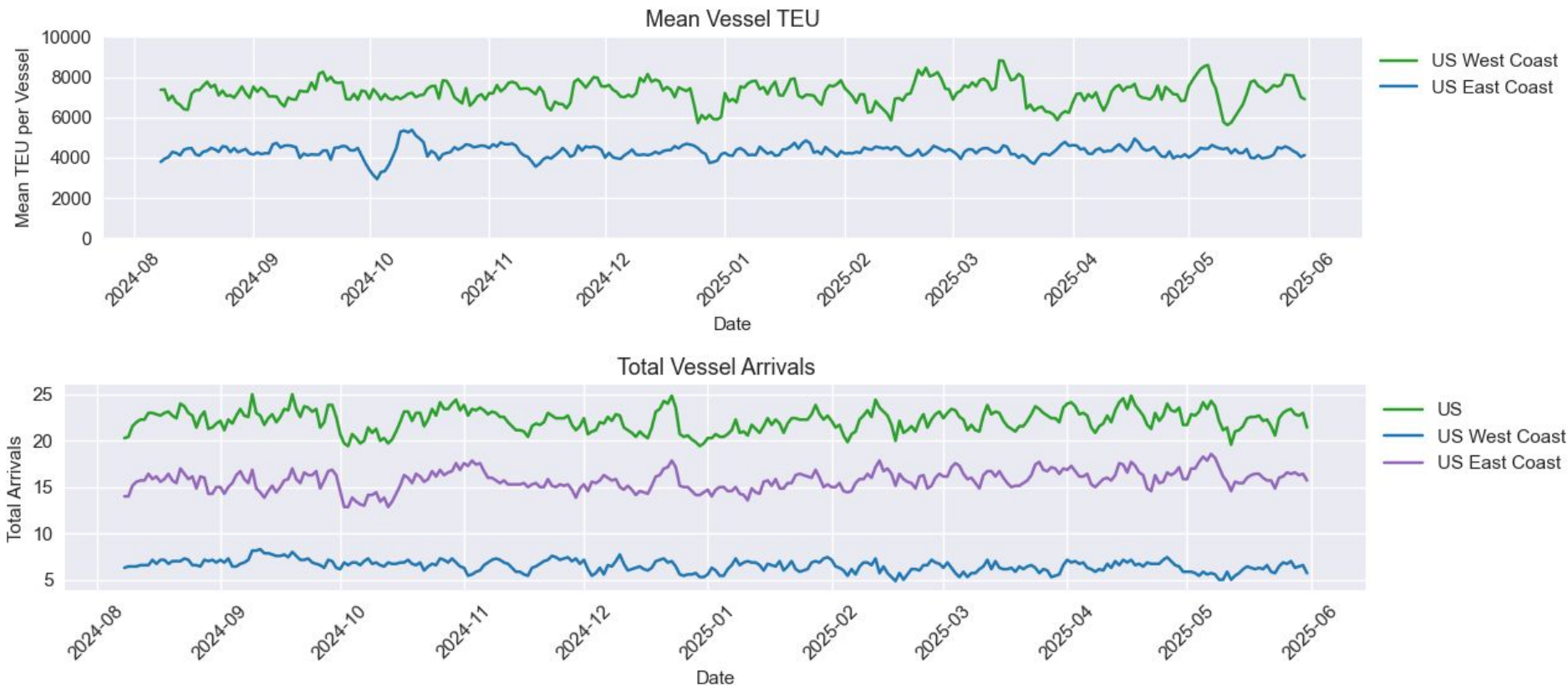
1 billion+

daily AIS records received

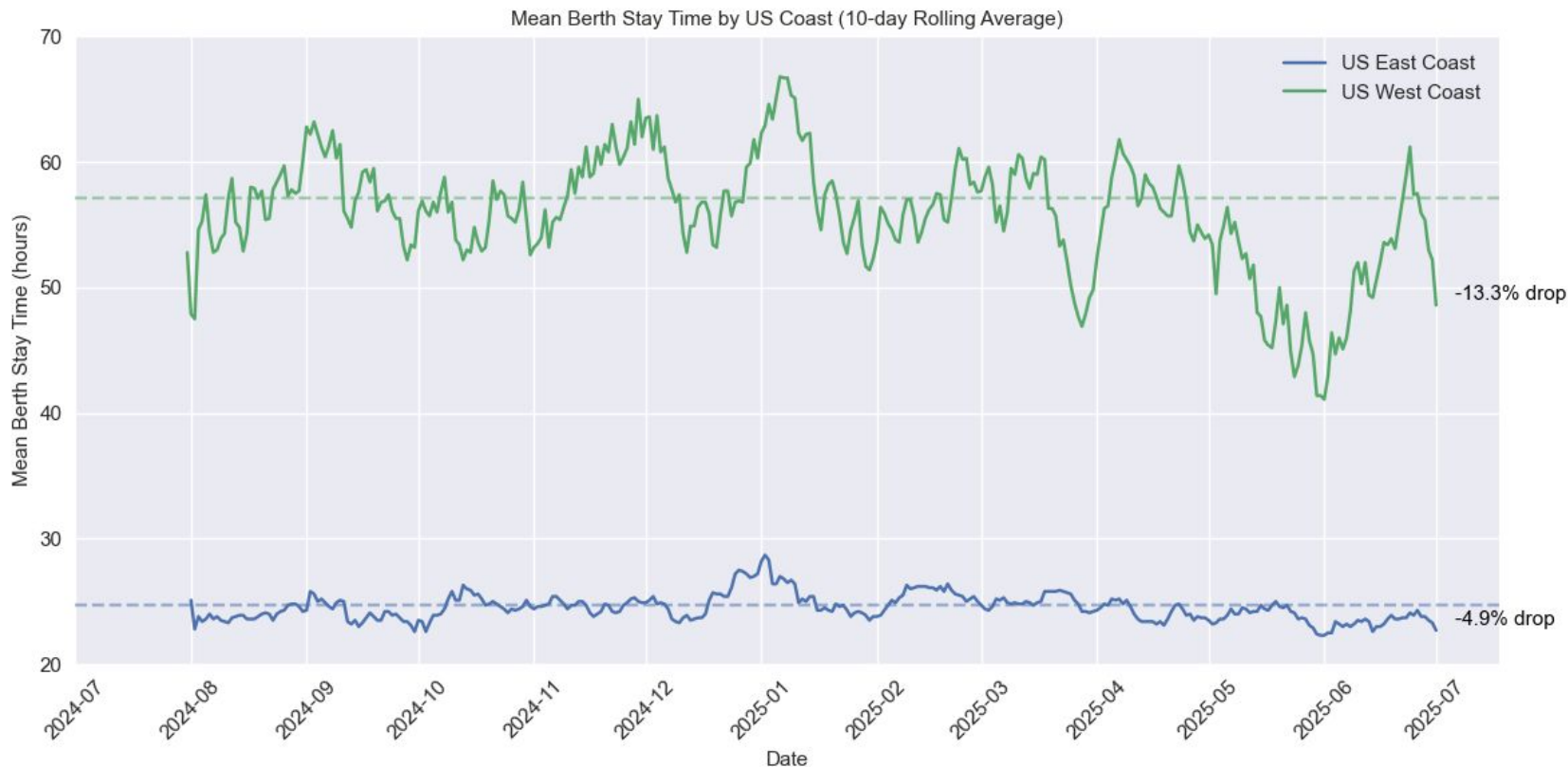
Rich input for accurate container tracking and predictive insights



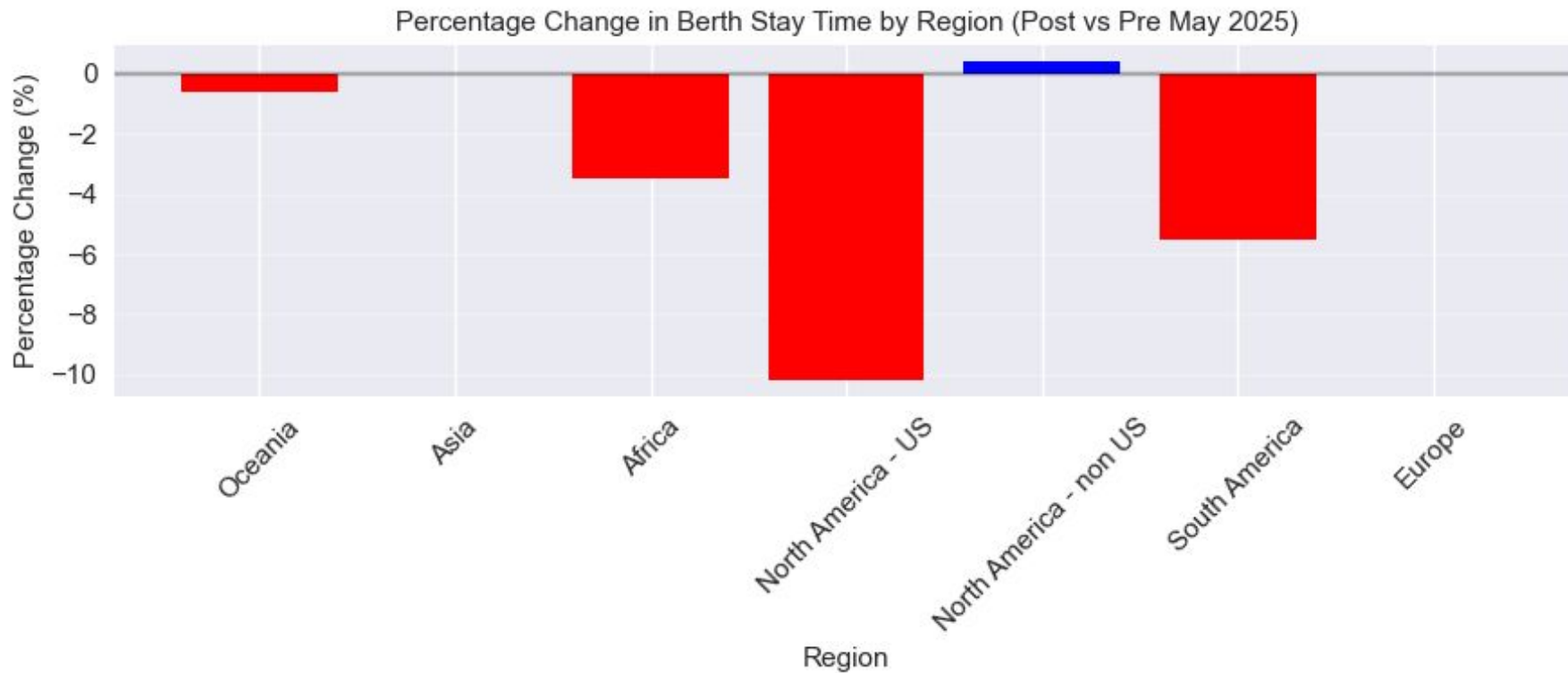
Compared to pre-May 2025, a similar number and the same type/size of vessels (in terms of total TEU capacity) are arriving at U.S. ports, indicating that carrier schedules haven't been significantly affected.



However, vessels are spending less time at berth, suggesting they are loading/unloading fewer TEUs than before



This trend is most prominent in the U.S. but can be seen in other regions



marinetraffic
a kpler brand

Q&A



Kpler Pulse

The Americas Series



((►)) Live Webinars

ENGLISH | ESPAÑOL | PORTUGUÊS

Navigating U.S. trade policy:

**Impacts on
container shipping
and port activity**

Dates: July 9 + 10

Global market analysis:

**State of play
in CPP**

Date: July 17 + Aug 19

Navigating U.S. trade policy:

**Impacts on
sanctioned cargoes
and AIS spoofing**

Dates: July 22 + 23

Weather, risk, regional drivers:

**Asian LNG demand
summer 2025
outlook**

Dates: July 29 + 30